

Product Catalogue



Assistive Mobility Devices



 www.astrogroup.co.za



About Astro Quip

The Astro Group is an established leader in the supply, fabrication, and surface finishing of general and bespoke aluminium products. This includes our impressive range of Astro Quip assistive mobility devices consisting of elbow crutches, walking sticks, walkers and rollators as well as related mobility accessories.

The majority of our range is designed, manufactured and tested in South Africa at our own facilities to ensure consistent levels of product quality in accordance with the relevant SABS and ISO standards applying to mobility aids.



Crutches



ErgoGrip Crutch

Designed for strong, lightweight support. The ergonomic grip is the crutch's key feature, keeping the wrist in a comfortable position and reducing stress on the hands, wrists, elbows, and shoulders.

- Weight limit: Standard 120kg, Permanent & Permanent Heavy Duty 180kg
- Glass-filled polypropylene top (forearm support) which ensures long-lasting dependability
- Quality rubber tip with a wide base provides secure grip across surfaces
- Contoured arm cuffs and grips moulded for comfort and better stability
- Standard: Single pin for adjustable height
- Permanent & Permanent Heavy Duty: Length can be cut to size
- Height range from handle to ground: Standard 76 - 99cm, Permanent & Permanent Heavy Duty 138.5cm
- Foot size: Standard 22mm, Permanent & Permanent Heavy Duty 24mm

Available Colour ●



Plastic Top Elbow Crutch

An ergonomically designed elbow crutch for adult patients and primarily to assist with recovery, improve mobility and provide support for lower extremity injuries.

- Weight limit: Adult 120kg, Youth 80kg, Paediatric 60kg
- Glass-filled polypropylene top (forearm support) for extra strength
- Contoured arm cuffs and grips moulded for comfort and better stability
- Single pin for adjustable height
- Extensions available: 55cm
- Height range from handle to ground: Adult 70 - 90cm, Youth 52 - 74.5cm, Paediatric 42 - 64cm
- Foot size: Adult 22mm, Youth & Paediatric 19mm

Adult Colours ● ● ● ● ● ● ● ● ● Youth & Paediatric ● ● ● ●



Standard Elbow Crutch

An ergonomically designed elbow crutch for adult patients and primarily to assist with recovery, improve mobility and provide support for lower extremity injuries.

- Weight limit: Adult 120kg, Youth 80kg, Paediatric 60kg
- Extensions available: 55cm
- Height range from handle to ground: Adult 70.3 - 92.7cm, Youth 51 - 73cm, Paediatric 41 - 63cm
- Foot size: Adult 22mm, Youth & Paediatric 19mm

Adult Colours ● ● Youth & Paediatric ● *Adult colours subjected to availability* ● ●



ISO 9001:2015

Astro Quip have implemented and apply a quality management system which is in compliance with the requirements of ISO 9001:2015.

Crutches



Standard Double Adjustable Elbow Crutch

An ergonomically designed elbow crutch for adult patients and primarily to assist with recovery, improve mobility and provide support for lower extremity injuries. The double adjustable elbow crutch allows both the shaft (lower tube) and the cuff height to be adjusted for an exact fit. This crutch is subject to MOQ's.

- Weight limit: Adult 120kg
- Extensions available: 55cm
- Height range from handle to ground: Adult 70.3 - 92.7cm
- Foot size: Adult 22mm

Available Colour 



Solid Permanent Crutch

A permanent crutch ideal for patients who require long-term walking support.

- Weight limit: Standard 120kg, Heavy duty 150kg
- Length can be cut to size
- Height range from cuff to ground: 120cm
- Foot size: 24mm (For standard and heavy duty options)

Available Colours    



Gutter Crutch

Designed for those suffering with arthritis or impaired grip as well as patients who are on partial weight bearing. Each crutch has a padded forearm trough that distributes a user's weight over a large support area.

- Weight limit: 100kg
- Available in adult size only
- Adjustable hand grip
- Forearm padded with sponge and Velcro strap
- Adjustable handle from 10 - 20cm
- Height range from handle to ground: 110 - 120cm
- Foot size: 22mm

Available Colour 

Walking Sticks



Adjustable S-Bend Walking Stick

Primarily used to aid walking, provide postural stability and support, or assist in maintaining a good posture.

- Weight limit: 100kg
- Adjustable height from handle to ground: 72 - 94cm
- Foot size: 22mm

Available Colour Standard colours available on request



Adjustable Classic Walking Stick

The perfect solution for the elderly, the physically challenged, or patients who have trouble walking or standing. The design is suitable for left and right handed users.

- Weight limit: 110kg
- Adjustable height from handle to ground: 70 - 90cm
- Foot size: 19mm

Available Colours



Folding Walking Stick

A lightweight, compact and adjustable walking stick for the elderly, the physically challenged, or patients who have trouble walking or standing. The design is suitable for left and right handed users.

- Weight limit: 110kg
- Adjustable height from handle to ground: 84 - 94cm
- Folded length is 30cm
- Foot size: 19mm

Available Colour



Quadruped Walking Stick

The perfect solution for the elderly, the physically challenged, or patients who have trouble walking or standing. The design is suitable for left and right handed users.

- Weight limit: 110kg
- Adjustable height from handle to ground: 70 - 90cm
- Foot size: 16mm

Available Colour

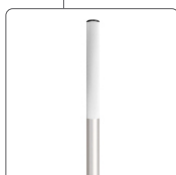
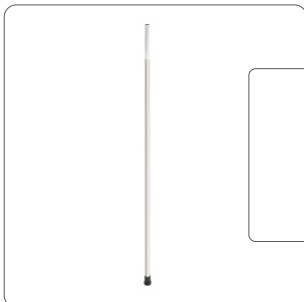


Tripod Walking Stick

The perfect solution for the elderly, the physically challenged, or patients who have trouble walking or standing. The design is suitable for left and right handed users.

- Weight limit: 110kg
- Adjustable height from handle to ground: 70 - 90cm
- Foot size: 16mm

Available Colour



Walking Pole

Designed for individuals transitioning from a walker, cane or crutch to a more independent gait, such as patients rehabilitating from injury or conditions like stroke.

- Weight limit: 120kg
- Standard length: 152cm
- Length can be cut to size
- Additional feet can be bought separately
- Foot size: 24mm

Available Colour

Walkers & Rollators



Folding Walker/Rollator Two Push Button

An easy-to-use folding walker designed as an ideal and dependable solution for those who require a supportive yet durable aid for their daily activities. This walker can be folded with the push of a quick double release button allowing for efficient storage and travel. The lightweight aluminium frame features soft grip handles and height adjustable legs to ensure that the set-up is best suited to the user's anatomy.

Wheels can be added to convert the walker into a rollator designed to be used primarily by people who are recuperating from leg or back injuries as well as hip and knee replacements. The two wheels at the front make for easier and more energy efficient propulsion whilst still providing a stable base of support.

- Weight limit: Adult 120kg, Youth 80kg, Paediatric 60kg
- Two push button release system
- Also available as a rollator - wheels sold separately
- Heights from handle to ground: Adult 80 - 87cm, Youth 66 - 75cm, Paediatric 56 - 63cm
- Foot size: 27mm

Available Colour



Rollator Wheel Set

Our rollator wheels are used with the folding walker to create a rollator.

- Wheel diameter: 12.5cm
- Sold in pairs



Folding Walker/Rollator with Gutter Top

Designed to be used primarily by people who are unable to take weight through their wrists and hands, for example, people with Rheumatoid Arthritis of the hands who cannot grasp handles of frames.

- Two push button release system
- Also available as a rollator - wheels sold separately
- The gutters are detachable
- Foot size: 27mm

Available Colour



Folding Walker One Push Button

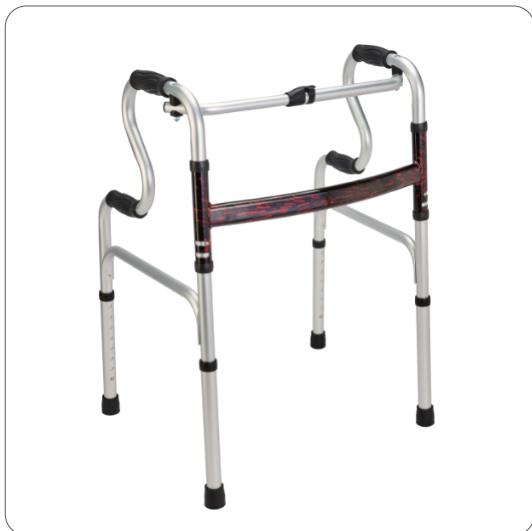
An easy-to-use folding walker designed as an ideal and dependable solution for those who require a supportive yet durable aid for their daily activities. This walker can be folded with the push of a quick single release button allowing for efficient storage and travel.

The lightweight aluminium frame features soft grip handles and height adjustable legs to ensure that the set-up is best suited to the user's anatomy.

- Weight limit: 110kg
- Length 58cm, Width 49cm, Height 79 - 97cm
- Foot size: 27mm

Available Colour

Walkers



Adjustable Reciprocal Folding Two Step Walker

An easy-to-use reciprocal folding walker with stand assist. The reciprocal walking frame walks with the user. There is no need to lift the walker forward with each step, rather this walker when used correctly, steps with the user. This walker may also be used as a rigid frame.

This walker can be folded with the push of a quick single release button allowing for efficient storage and travel. The lightweight aluminium frame features soft grip handles and height adjustable legs to ensure that the set-up is best suited to the user's anatomy.

- Weight limit: 110kg
- Length 53cm, Width 47cm, Height 73 - 85cm
- Foot size: 27mm

Available Colour



Bariatric Folding Walker

Provides a practical, dependable solution for those requiring stable support during daily activities. To ensure an ergonomic fit, the walker features 8 adjustable height settings via a simple one-push-button mechanism on each leg. Soft-grip handles are included to enhance comfort and reduce hand pressure during extended use.

For added convenience, a two-push-button release system allows the unit to fold quickly for storage or travel. While designed as a standard folding walker, it is also available in a rollator configuration with wheels sold separately.

- Weight limit: 300kg
- Length 48cm, Width 75cm, Height 74 - 94cm
- Foot size: 22mm

Available Colour



Folding Walker (Youth)

An easy-to-use Folding Walker designed specifically for children who require a supportive yet durable aid for their daily activities. This walker can be folded with the push of a quick single release button allowing for efficient storage and travel.

The lightweight aluminium frame features soft grip handles and height adjustable legs to ensure that the set-up is best suited to the user's anatomy.

- Length 47cm, Width 58cm, Height 58 - 68cm
- Foot size: 27mm

Available Colour

Walkers



Folding Walker Standard Kiddies Extra Small (Paediatric)

An easy-to-use folding walker designed specifically for children who require a supportive yet durable aid for their daily activities. This walker can be folded with the push of a quick single release button allowing for efficient storage and travel.

The lightweight aluminium frame features soft grip handles and height adjustable legs to ensure that the set-up is best suited to the user's anatomy.

- Length 35cm, Width 39cm, Height 49 - 54cm
- Foot size: 27mm

Available Colour



Four Wheel Folding Rollator

A quality rollator designed to assist patients with improved mobility. With an ergonomic design the lightweight frame is fitted with four sturdy castor wheels for efficient movement in every direction. Secure light touch hand brakes on both handles make stopping effortless and both can be locked in place to ensure safety in a seated or standing position. This rollator is available in a standard and wide seat size option.

- Weight limit: Standard 100kg or Wide 136kg
- Both handles are height adjustable
- Fitted with a wide, comfortable seat and back rest
- A secure detachable basket for storing belongings
- Folds flat to a compact size for easy storage or transport
- Standard option with 19cm diameter wheels
- Wide option with 20cm diameter wheels
- Standard option seat size is 31 x 34cm
- Wide option seat size is 33 x 46cm

Available Colour



Folding Knee Scooter with Rear Suspension

Provides stable, pain-free mobility for recovery from foot, ankle, or lower-leg surgery, or below-knee amputation. Its four wheels and rear shock absorber ensure a smooth ride indoors and outdoors. A rear spring suspension adds comfort, while dual handbrakes offer safe control and parking. Quick-release levers adjust the handle height and fold the scooter flat for easy transport, with a detachable bag to keep essentials close.

- Length 85cm, Width 43cm, Height 84 - 99cm
- Knee pad: Length 32cm, Width 18cm, Height 49cm - 56cm
- Weight: 10kg
- Wheels: 20cm diameter

Available Colour

Orthotic Products



Pneumatic Walker Boot

Designed to provide superior stabilisation, comfort, and protection for individuals recovering from left or right foot or ankle injuries. Featuring an advanced pneumatic (air) system, this boot offers customisable compression to aid healing, reduce swelling, and enhance patient comfort. Available in a long and short option.

- Junior Sizes: Small
- Adult Sizes: Medium, Large, XLarge
- Height: Short 28cm, Long 43cm

Available Colour 



Ankle Brace

Designed to deliver support, stability, and comfort for active individuals and those recovering from injury. This versatile brace combines durability with lightweight performance, ensuring users stay protected without compromising mobility.

- Sizes: XSmall, Small, Medium, Large, XLarge, 2XLarge

Available Colour 



Hinged Knee Wrap & Sleeve

Designed to provide targeted support, stability, and comfort for individuals recovering from left or right knee injuries or managing ongoing knee conditions. Ideal for active individuals, athletes, and everyday users, this brace combines durable materials with an ergonomic design to help protect and support the knee without restricting natural movement. The Hinged Knee Wrap is an excellent option when pain or swelling makes it too difficult to pull a tight sleeve over the foot and lower leg.

- Sizes: XSmall, Small, Medium, Large, XLarge, 2XLarge, 3XLarge

Available Colour 



Thumb Spica

Provides targeted support and immobilisation for the wrist and thumb. Crafted from high-quality breathable materials, with integrated aluminium stays for stabilisation, it ensures comfort while effectively aiding recovery from injuries and chronic conditions. Suitable for both left and right hands, it combines versatility, comfort, and durability in one universal solution.

- Sizes: XSmall -Small, Medium - Large, XLarge - 2XLarge

Available Colour 



Wrist Brace

Designed to provide effective support and relief for sprained, injured, or painful wrists, whether during daily activities, rest, or sleep. Manufactured to the highest quality standards, this brace combines comfort, durability, and adjustability, making it suitable for a wide range of users.

- Sizes: XSmall -Small, Medium - Large, XLarge - 2XLarge

Available Colour 



Adult & Paediatric Arm Sling

Provides secure, comfortable, and adjustable support for the left or right arm, elbow, and wrist during recovery from fractures, sprains, or post-surgical procedures. Lightweight yet durable, it offers excellent immobilisation while ensuring all-day comfort for the patient. Playful paediatric version also available.

- Sizes: Small, Medium, Large, XLarge, 2XLarge

Available Colour  

Support Products

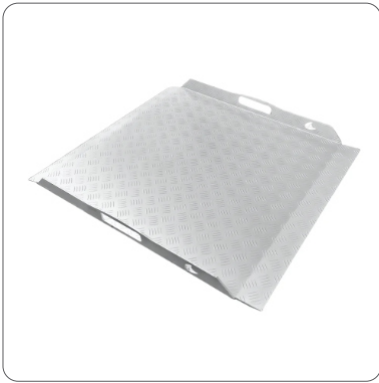


PositionPro One

A lightweight, stable and adjustable stand that provides targeted support, whether for cross-table hip X-rays, wrist splinting or post-op knee elevation. Its durable aluminium construction, non-slip handle and sturdy H-base offer solid stability on imaging tables, ward beds or therapy plinths. Quick height adjustment allows for faster setups, fewer repeat exposures and hands-free use. It is trusted in radiology, rehab and orthopaedics for low-maintenance, effective limb positioning and long-term reliability.

- Height 480mm - 650mm
- Single pin for adjustable height
- Weight: 1.85kg
- Frame & Base Material: Steel & Aluminium
- Handle Material: High Quality Plastic and Rubber

Available Colour



Wheelchair & Access Ramp

Astro Quip's Wheelchair Ramps make everyday access simple and stress-free, whether at home, at work, or anywhere in between. Designed for safety and ease of use providing a smooth and reliable way to navigate steps with confidence.

- Sizes: Small (750mm), Medium (900mm), Large (1200mm)
- Integrated 60mm high raised side walls with handles on both edges
- Supports the 1:12 slope ratio for safe and regulation compliant access
- Designed with a 5° entry slope and a 15° exit slope

Available Colour

Bathroom Mobility Aids



Shower Chair

Designed for patients that require extra stability and support for safer bathing. It features a lightweight aluminium frame, height-adjustable legs, a removable backrest, and padded armrests for easier side transfers. Non-slip feet keep it secure, and the drain-through seat reduces slipping.

- Weight limit: 100kg
- Width 52cm, Depth 36cm, Height 77cm - 87cm
- Seat: Width 40cm, Depth 33cm
- Foot size: 27mm

Available Colour



3 in 1 Basic Commode

Designed to work as a bedside commode, raised toilet seat, or sturdy safety frame. Its durable powder-coated steel frame offers reliable support, while moulded armrests and a fixed backrest add comfort and stability. Tool-free height adjustment and a 5L slide-out bucket with lid make cleaning and daily use simple.

- Weight limit: 100kg
- Width 56cm, Height 64cm - 80cm
- Width between arms: 49cm
- Seat: Width 36cm, Depth 44cm
- Armrest height: 27cm
- Foot size: 27mm

Available Colour

Mobility Accessories



Super Soft Grip

Available in adult size and made from thick black rubber.



Plastic Cuffs

Available in adult, youth and paediatric sizes in black only.



Gutter Top

Used with the folding walker and wheel set to create a rollator with a gutter top.

- Weight limit: 110kg
- Sold in pairs
- Soft sponge on base plate and Velcro strap
- Adjustable plastic handle
- Available in natural colour only



Standard Feet

Standard crutch feet made from black PVC.

- Available in 16, 19, 22, 24, and 27mm diameter options
- 10 units per pack
- Easy to attach
- Should be replaced regularly
- Thick base and galvanised washer inside



Toilet Seat Raiser

Used by patients especially after hip replacement surgery or other situations.

- Weight limit: 140kg
- Height is 150mm
- Fits all standard size toilets
- Made from white plastic (LLDPE)
- Features stainless steel feet with rubber tips
- Non-adjustable



www.astrogroup.co.za

Leading Aluminium

SUPPLIER | FABRICATOR | SURFACE FINISHER



+27 11 452 9748



info@astrogroup.co.za



Head Office, Factory & Warehouse
Gauteng, South Africa

20 Ingwe Road
Sebenza
Johannesburg
1609



Regional Office & Warehouse
Western Cape, South Africa

Unit B12 Prime Business Park, Mocke Road
Diep River
Cape Town
7800



Regional Office & Warehouse
Eastern Cape, South Africa

Unit 7 Brydon Park, 3 3rd Avenue
Newton Park
Port Elizabeth
6045



Regional Warehouse
KwaZulu-Natal, South Africa

5 Stanhope Place
Umgeni Park
Durban North
4051